

AK distribution board system

IP65 - 400/690V

Ake distribution boards

IP55 - 400/690V



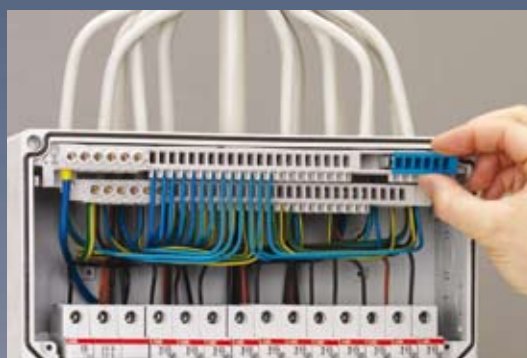
- 3 - 70 way distribution units
- Pre-assembled IP 65 sealing membranes
- Flame resistant polystyrene or polycarbonate, complying with DIN VDE 0471
- Can be combined with other AK components (from AK 14)
- Built in screwless PE/N terminals (AK / AKi)

- Grey colour similar to RAL 7035
- Wide range of accessories come with delivery
- Design and functionality characterise the distribution boards of the AK housing system
- Individual transparent doors can be lead sealed, blanking off of individual rows

- With 150mm distance between rails, the distribution boards provide generous space for wiring
- Unlimited permutations of AK components give a variety of options when installing
- 4 basic sizes, cover all individual application requirements



Polystyrene & Polycarbonate



AK II Plus
Large extra
connection space,
top or bottom
by choice



Individual doors
fixed left-hand or
right-hand

Screwless PE/N terminals beginning with AK 14

Enormous time-saving in
wiring due to well-
known and field-proven
plug-in technique ✓

Reliable and stable
terminal technique ✓

Connection of flexible
conductors, with wire-
end ferrule is possible ✓

Conductors can be easily
detached by using a
usual commercial screw
driver ✓

Top neutral with two-
stage terminal
(beginning with AK 42)
facilitates maintenance
work ✓

Retrofitting of a
separate screwless N/FI
rail into the neutral of
the two-stage terminal is
possible ✓

Terminals are compatible
with installed AK
distributors (beginning
with AK 14) ✓

VDE approval ✓



AK-i IP65 - Polycarbonate AK IP65 - Polystyrene



AK-i Range of Polycarbonate Distribution Boards Selection

With Terminals			
Description	PE/N Terminal Configuration	Cat No.	Dimensions
AKi03 - 3 way	2 x 4 pole	736 403 01	100 x 150 x 96mm
AKi 05 - 5 way	2 x 5 pole	736 405 01	125 x 200 x 122mm
AKi 09 - 9 way	2 x 7 pole	736 409 01	200 x 200 x 122mm
AKi 12 - 12 way	2 x 12 pole	736 412 01	250 x 200 x 122mm
AKi 14 - 14 way	3 x screw 14 screwless	736 414 01	300 x 300 x 142mm
AKi 28 - 28 way	6 x screw 21 screwless	736 428 01	450 x 300 x 142mm
AKi 42 - 42 way	6 x screw 21 screwless	736 442 01	600 x 300 x 142mm
AKi 56 - 56 way	6 x screw 21 screwless	736 456 01	750 x 300 x 142mm
AKi 70 - 70 way	6 x screw 21 screwless	736 470 01	900 x 300 x 142mm
AKi 14 Plus - 14 way	1 row 35mm rails	738 414 01	450 x 300 x 142mm
AKi 28 Plus - 28 way	2 row 35mm rail	738 428 01	600 x 300 x 142mm
AKi 42 Plus - 42 way	3 row 35mm rails	738 442 01	750 x 300 x 142mm
AKi 56 Plus - 56 way	4 row 35mm rails	738 456 01	900 x 300 x 142mm

AK Range of Polystyrene Distribution Boards Selection

With Terminals			
Description	PE/N Terminal Configuration	Cat No.	Dimensions
AK 03 - 3 way	2 x 4-pole	735 403 01	150 x 100 x 96mm
AK 05 - 5 way	2 x 5-pole	735 405 01	200 x 125 x 122mm
AK 09 - 9 way	2 x 7-pole	735 409 01	200 x 200 x 122mm
AK 12 - 12 way	2 x 12-pole	735 412 01	200 x 250 x 122mm
AK 24 - 24 way	2 x 16-pole	735 424 01	250 x 370 x 122mm
AK 14 - 14 way	6 x screw 21 screwless	735 414 01	300 x 300 x 142mm
AK 28 - 28 way	6 x screw 21 screwless	735 428 01	450 x 300 x 142mm
AK 42 - 42 way	6 x screw 21 screwless	735 442 01	600 x 300 x 142mm
AK 56 - 56 way	6 x screw 21 screwless	735 456 01	750 x 300 x 142mm
AK 70 - 70 way	6 x screw 21 screwless	735 470 01	900 x 300 x 142mm
AK 14 Plus - 14 way	1 row 35mm rails	737 414 01	450 x 300 x 142mm
AK 28 Plus - 28 way	2 row 35mm rails	737 428 01	600 x 300 x 142mm
AK 42 Plus - 42 way	3 row 35mm rails	737 442 01	750 x 300 x 142mm
AK 56 Plus - 56 way	4 row 35mm rails	737 456 01	900 x 300 x 142mm

AKe (Economy) Unassembled Polystyrene



AKe Range of IP55 Polystyrene Distribution Boards Selection

With Terminals			Without Terminals		
Description	PE/N Terminal configuration	Cat No.	Description	Cat No.	Dimensions
AKe 03 - 3 way	2 x 4-pole	735 503 0	AKe 03 - 3 way	735 603 01	100 x 150 x 96mm
AKe 05 - 5 way	2 x 5-pole	735 505 0	AKe 05 - 5 way	735 605 01	125 x 200 x 122mm
AKe 09 - 9 way	2 x 7-pole	735 509 0	AKe 09 - 9 way	735 609 0	200 x 200 x 122mm
AKe 12 - 12 way	2 x 12-pole	735 512 01	AKe 12 - 12 way	735 612 01	250 x 200 x 122mm
AKe 24 - 24 way	2 x 17-pole	735 524 01	AKe 24 - 24 way	735 624 01	300 x 450 x 142mm
AKe 36 - 36 way	2 x 25-pole	735 536 01	AKe 36 - 36 way	735 636 01	300 x 600 x 142mm

- 3 - 36 way distribution units
- Including PE/N terminals

- Can be combined with additional housings of the AK-system

- Individual transparent doors can be lead sealed, blanking off of individual rows

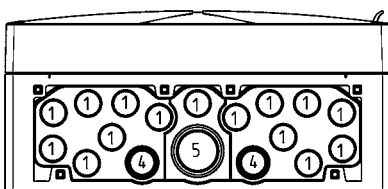
- Including stepped nipples for cable entry

Knock-out Entries

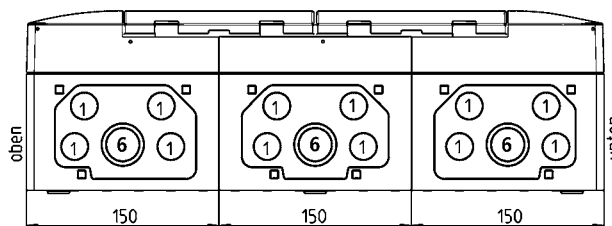
AK / AKi Plus

Example AK / AKi 28

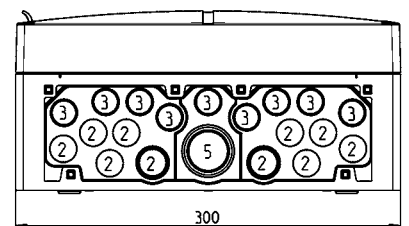
Top side below



Both side walls



Top side above



- 1 = M20 knock-out
- 2 = Ø20 fitted with double membrane nipple
- 3 = Ø20 knock-out for double membrane nipple
- 4 = M20/25 knock-out
- 5 = M32/M40 knock-out
- 6 = M25/M32 knock-out